



TVV SOUND

P R O J E C T

TVVSOUND.BE

*APG*



More than 40 years have left their mark on APG's history with the creation and realization of acoustic and electronic innovations: Appolito's baffle (1982), coaxial speakers (1991), ISOTOP™ driver, Bandpass and K-Horn loads, dynamic protection of cone drivers.

## TABLE OF CONTENTS

- EASE FOCUS 3 ..... 3
- IX SERIES ..... 4
- IX-O SERIES ..... 6
- SPOT SERIES ..... 8
- APG NESS ..... 9
- DX SERIES ..... 10
- PA SYSTEMS ..... 12
- SUBWOOFERS ..... 14
- DIGITAL PROCESSOR ..... 16
- APG LIFE MANAGER ..... 17
- AMPLIFIER ..... 18



# EASE FOCUS 3



EASE FOCUS Acoustic simulation

3D direct SPL simulation

High resolution speaker data (GLL)

Simulation of up to 30 acoustic sources

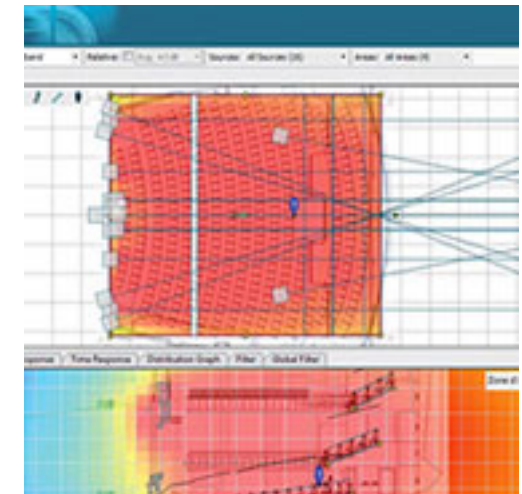
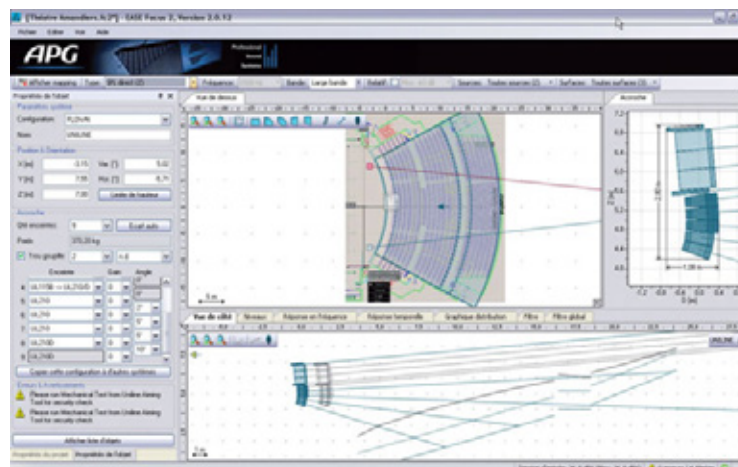
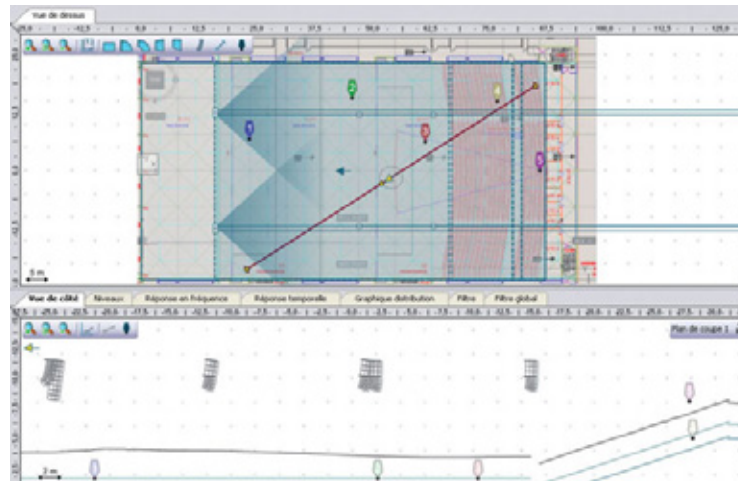
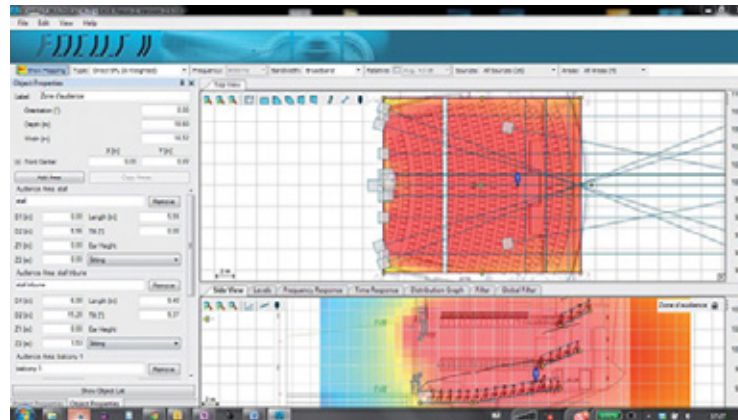
EASE Focus 2 is 3D simulation software recommended by APG. It allows acoustic simulation of the full range of APG loudspeakers, including line array systems and configurable loudspeakers.

It is the ideal tool for quickly and easily making an accurate prediction of system performance in a given room. The interface is designed to give field and sales personnel quick access to the simulation, and to provide a second level of advanced functionality for system engineers and the technical department.

Speaker data GLL is available for all APG series speakers.

Features:

- Simple and intuitive interface
- Possibility to import schematic diagrams and images (e.g. aerial photos) for fast and accurate custom public modeling
- Virtual filters to equalize different sources
- High accuracy thanks to high internal data resolution and GLL data format
- Support for multiple languages: English, French, German, Spanish, Italian, Portuguese.



DOWNLOAD:



# IX SERIES

Multifunctional speaker

APG



iX series speakers feature coaxial technology with integral baffle: the front face of the speaker is designed to eliminate diffraction and provide a consistent, linear acoustic field.

The iX range comprises 5 models: iX5, iX6, iX8, iX12 and iX15, each with an integrated coaxial loudspeaker with passive crossover and bass reflex loading for stand-alone operation.

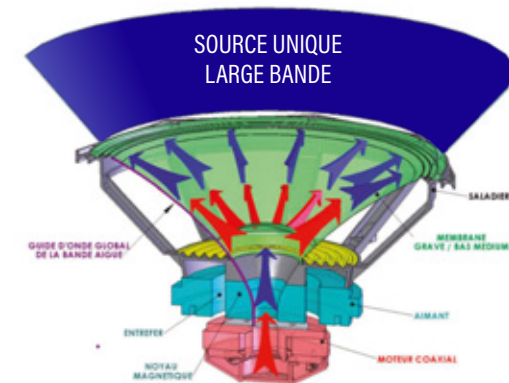
- Anti-diffraction baffle: less feedback
- Wide range of accessories facilitating integration
- Euroblock connectors (iX5, iX6)
- Available for all colors

Reference	Color	Bandwidth	Nominal impedance	Directivity (H/V)	Power	Power max	SPL max	Dimension	Weight	IP
iX5	B/W/COL	60Hz-20kHz	16 ohm	105°x105°	100W	400W	116dB/1m	170x170x190mm	4,2kg	43
iX6	B/W/COL	60Hz-20kHz	8 ohm	120°x120°	100W	400W	118dB/1m	220x316x178mm	6,1kg	43
iX8 M2	B/W/COL	60Hz-20kHz	8 ohm	100°x100°	200W	800W	126dB/1m	279x410x232mm	10,9kg	43
iX12	B/W/COL	50Hz-20kHz	8 ohm	90°x90°	450W	1800W	134dB/1m	400x597x341mm	20kg	43
iX15	B/W/COL	45Hz-20kHz	8 ohm	90°x90°	550W	2200W	136dB/1m	440x640x377mm	23kg	43

Coaxial technology consists of combining several loudspeakers along the same axis of diffusion offering linear amplitude and phase curves as well as a coherent acoustic field.

This set offers:

1. «Natural» sound
2. Sound comfort
3. Better feedback recoil



The Appolito baffle is based on the concept of a vector coupling of 2 identical loudspeakers which makes it possible to obtain a directivity lobe without having to resort to a physical horn.

This technique allows to:

1. Control directivity in the mid band
2. Limit distortion and diffraction caused by a physical horn
3. Obtain a very high efficiency gain thanks to close coupling

# IX-0 SERIES

Multifunctional outdoor speaker

APG



The iX-0 range provides the sound quality of the iX range loudspeakers for outdoor installations. The iX-0 loudspeakers have the same characteristics and performances as the loudspeakers of the iX range by integrating elements allowing them to remain installed outside: Black polyurethane paint, stainless magnelis grille and removal on the cabinetwork of all cavities or asperities that could trap water runoff.

For aesthetic and durable installations, the accessories of the iX-0 range are made of stainless steel.

Reference	Color	Bandwidth	Nominal impedance	Directivity (H/V)	Power	Power max	SPL max	Dimension	Weight	IP
<b>iX6-0</b>	B/W	60Hz-20kHz	8 ohm	120°x120°	100W	400W	118dB/1m	220x316x178mm	6,1kg	54
<b>iX8-0 M2</b>	B/W	60Hz-20kHz	8 ohm	100°x100°	200W	800W	126dB/1m	279x410x232mm	10,9kg	54
<b>iX12-0</b>	B/W	50Hz-20kHz	8 ohm	90°x90°	450W	1800W	134dB/1m	400x597x341mm	20kg	54
<b>iX15-0</b>	B/W	45Hz-20kHz	8 ohm	90°x90°	550W	2200W	136dB/1m	440x660x377mm	23kg	54



# SPOT SERIES

2 way passive loudspeaker, high directivity

**APG**



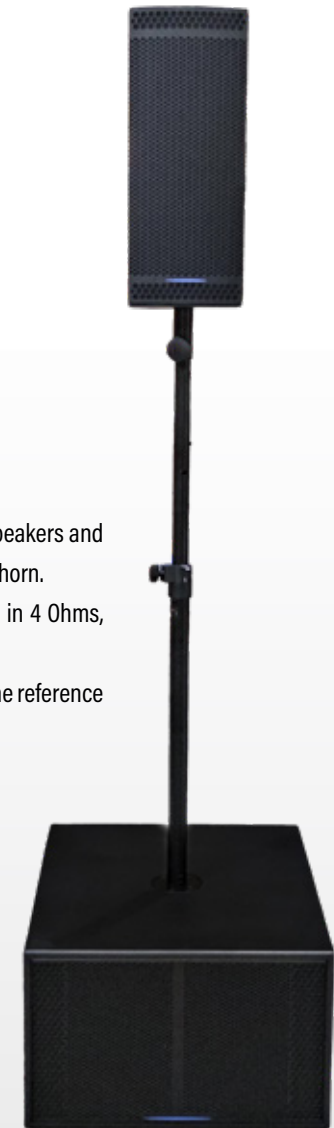
2-way passive loudspeaker

SPOT 2.6 is a passive broadband loudspeaker equipped with 2 6.5-inch speakers and a compression chamber motor loaded by a 70° x 50° constant directivity horn.

This loudspeaker is available in 2 impedance values: SPOT 2.6/4 models in 4 Ohms, SPOT 2.6/16 models in 16 Ohms.

A fixed installation version is also available exclusively in 16 Ohms under the reference SPOT 2.6-i

- Incredible sound definition and clarity
- Simple and intuitive hanging system
- 2 versions: 4Ω or 16Ω
- Constant horizontal directivity at 70° and 50° / Rotating horn



Reference	Color	Bandwidth	Nominal impedance	Directivity (H/V)	Power	Power max	SPL max	Dimension	Weight	IP
<b>SPOT 2.6/4</b>	B/W/COL	65Hz-19kHz	4 ohm	70°x50°	550W	2200W	131dB/1m	220x283x540mm	15,7kg	54
<b>SPOT 2.6/16</b>	B/W/COL	65Hz-19kHz	16 ohm	70°x50°	550W	2200W	131dB/1m	220x283x540mm	15,7kg	54
<b>SPOT 2.6/i</b>	B/W/COL	65Hz-19kHz	16 ohm	70°x50°	550W	2200W	131dB/1m	220x283x540mm	15,7kg	54



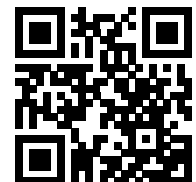
## SPATIALIZATION ACCESSIBLE TO EVERYONE



APG launches the NESS experience, the first totally free spatialization software solution supported by a manufacturer !

With NESS, APG wishes to offer a robust and proven spatialization solution built on the algorithms and principles available in the public domain. APG also wishes to create a community of users around immersive sound in order to offer developments that are as close as possible to market expectations.

DOWNLOAD:



# DX SERIES

Monitors and multi purpose

**APG**



DX5



DX8

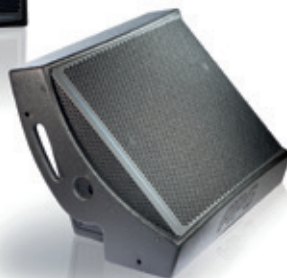


This series includes the versatile DX5, DX8, DX12, DX15, and SMX15 loudspeakers whose ergonomics and acoustic performance provide maximum flexibility of implementation whatever the application: main facade, additional facade, distributed sound system, backstage.

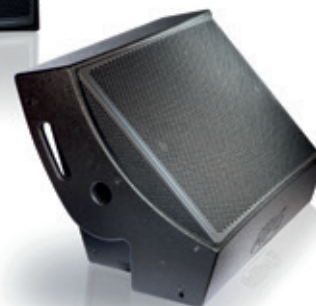
- High power coaxial system
- Front/Monitor use
- Integration on stand, on lyre, on subwoofer with coupling bar



DX12



DX15



Reference	Color	Bandwidth	Directivity (H/V)	Power	SPL max	Dimension	Weight
<b>DX5</b>	B/W	60Hz-20kHz	110°x110°	100W	124dB/1m	260x180x180mm	4kg
<b>DX8</b>	B	60Hz-20kHz	105°x105°	200W	130dB/1m	422x236x260mm	12kg
<b>DX12</b>	B	50Hz-20kHz	90°x90°	400W	136dB/1m	520x495x265mm	19kg
<b>DX15</b>	B	45Hz-20kHz	80°x80°	600W	139dB/1m	580x575x340mm	22kg

# PA SYSTEMS

Uniline compact

**APG**

UC206N



UC118i



UC115B



The UNILINE COMPACT is a small size "line source" system based on the concept of "Modular Line Array" invented by APG. The goal is to offer maximum versatility and scalability in order to cover with a single system the whole field of applications of line array systems from small to high power, and from short to long throw, indoors and outdoors, in fixed installation, rental or touring market.

The acoustic modularity is based on the the three speakers that compose the Compact Uniline system: UC206N model is the mid / long throw speaker, the UC206W model is the short / mid throw speaker and »downfill« the UC115B model is the dedicated bass speaker.

- Exceptional power-to-size ratio
- Constant horizontal directivity 70°H (UC206N)/110°H (UC206W)
- Integrated and intuitive rigging system
- Portability

Reference	Color	Bandwidth	Directivity (H/V)	Power	SPL max	Dimension	Weight
UC206N	B	55Hz-20kHz	70°x15°	300W(BF)+100W(HF)	134dB/1m	210x540x410mm	16,5kg
UC206W	B	55Hz-20kHz	105°x15°	300W(BF)+100W(HF)	132dB/1m	210x540x360mm	16kg
UC115B	B	35Hz-110Hz	Omnidirectionnal	1100W	138dB/1m	420x540x600mm	33kg
UC118i	B/W/COL	25Hz-80Hz	Omnidirectionnal	1100W	140dB/1m	704x530x755mm	50kg

# PA SYSTEMS

Uniline MAX

**APG**

UM210



UM121



The new Uniline Max line array system has been designed to provide sound reinforcement for indoor and outdoor concerts and events for up to 8000 people. Its acoustic design is based on APG's 40 years of experience in both diffraction treatment and coaxial mounting, enabling, faithful, powerful reproduction of voice and music. With Uniline Max, APG brings to the events market an ergonomic system designed for easy handling in all configurations. Each speaker's integrated suspension system enables traditional tension mounting, as well as compression or stack mounting. The system's ergonomic design makes it suitable for all types of stage and hall architecture.

Reference	Color	Bandwidth	Directivity (H/V)	Impédance	SPL max	Dimension	Weight
UM210	B	48Hz - 20kHz	100° x 10° (2)	8 ohms	142dB/1m	280x797x533mm	40kg
UM121	B	25 -110Hz	Omnidirectionnal	8 ohms	141dB/1m	613x743x820mm	70kg

# SUBWOOFERS

Compact subwoofer

**APG**

TB118S



IS110

The exclusive acoustic design of the subwoofers of the iS range has the effect of greatly reducing the load volumes in order to achieve an optimal size / low cut-off frequency ratio while gaining in acoustic efficiency.

In fixed installation, the compact dimensions of the iS subwoofers allow a non-obstructive arrangement in restricted environments and can be perfectly integrated under small stages or platforms and even under seats or benches. The connectors embedded in a cutaway are protected and allow discrete wiring. The range is perfectly suited for venues such as, for example, small theatres, conference rooms or themed bars.

The APG TB218S is a low frequency subwoofer designed to complement high power sound systems.



IS112



IS115



Reference	Color	Bandwidth	Power	SPL max	Dimension	Weight
<b>iS110</b>	B/W/COL	45Hz-150Hz	500W	132dB/1m	275x425x510mm	19,2kg
<b>iS110-0</b>	B/W	45Hz-150Hz	500W	132dB/1m	275x425x510mm	19,2kg
<b>iS112</b>	B/W/COL	45Hz-150Hz	800W	137dB/1m	325x525x610mm	24,1kg
<b>iS112-0</b>	B/W	45Hz-150Hz	800W	137dB/1m	325x525x610mm	24,1kg
<b>iS115</b>	B/W/COL	42Hz-120Hz	900W	138dB/1m	375x598x690mm	32,7kg
<b>iS115-0</b>	B/W	42Hz-120Hz	900W	138dB/1m	375x598x690mm	32,7kg
<b>TB118S</b>	B	25Hz-80Hz	1600W	150dB/1m	716x1160x716mm	74kg

# DIGITAL PROCESSOR

Digital speaker & system controller

**APG**



## DMS48F / DMS48F+DANTE

The DMS48F is a digital signal processing processor with 4 analog inputs/outputs. It offers all the filtering functions as well as real-time active loudspeaker protections.

The DMS48F-D is the DANTE version.

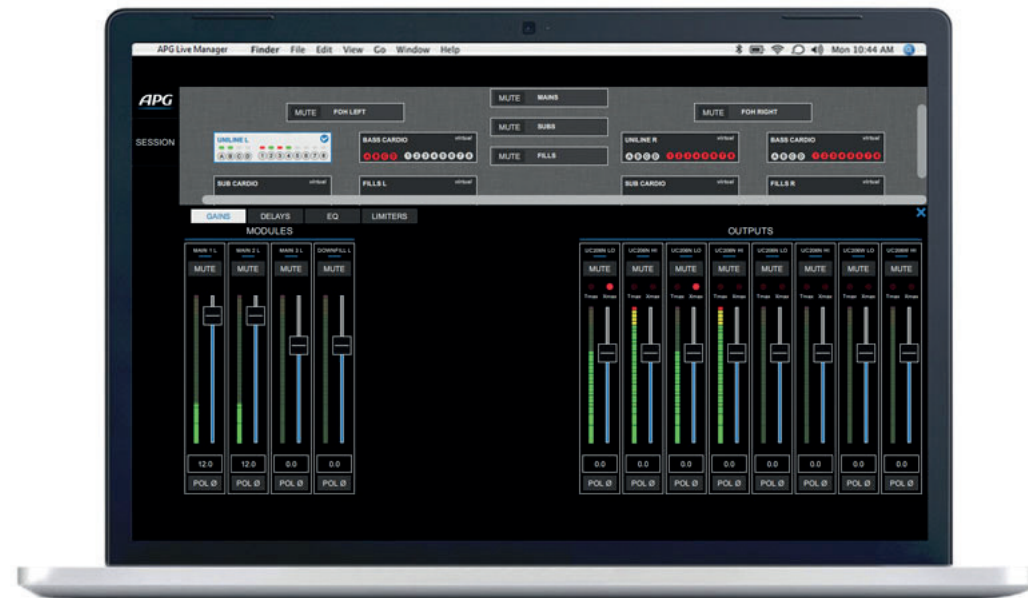
- High sound quality
- Dedicated APG presets
- ALM control software
- Ease of use
- Bundling features

References	DMS48F	DMS48F-D
<b>Inputs</b>	4 analog, 4 AES	4 analog, 4 AES + 4 DANTE
<b>Outputs</b>	8 analog, 8 AES	8 analog, 8 AES
<b>Audio inputs</b>	3 pin female XLR	3 pin female XLR + RJ45
<b>Audio outputs</b>	3 pin male XLR	3 pin male XLR
<b>Dimensions</b>	44x482x254	44x482x254
<b>Weight</b>	2,7kg	2,7kg



## Intuitively simple remote control and monitoring software

- System control & monitoring
- Quick and easy to use
- Cross-platform software
- Powerful feature: 1 click grouping
- Full system visualization
- Online or offline system creation
- Easily load presets speakers
- TCP-IP Ethernet protocol



With APG Live Manager, DMS48, DA50:4 and DA15:4 can be controlled remotely via a Windows(TM) computer or MacOS. APG Live Manager allows the user to work offline to remotely prepare for any type of project.

The functions of the new APG Live Manager are divided into three main modes:

### APG live manager macA setup mode for the preparation and installation phase

- Selecting input/output type (analog, AES or DANTE®)
- Counting
- Loading speaker presets
- Creating groups and assignment

### A tuning mode for configuration

- Boosts, delays, polarities and equalizer setup

**A monitoring mode that locks the application for live use.**

Minimum system requirements

32/64-bit Windows 7/8/10 - Mac OS X >2GHz Processor with >4Gb RAM

DOWNLOAD:



# AMPLIFIERS

***APG***

DA-8 AES / DA-8 DANTE  
DA-12 AES / DA-12 DANTE  
DA-1.4 / DA-1.4 DANTE  
DA-2.8 / DA-2.8 DANTE  
DA-6 / DA-6 DANTE

With the new DA range, APG completes its electronic offer with powerful products specifically designed for rental and service.

The DA8 and DA12 amplifiers have 4 analog or DANTE inputs and an integrated processor. Controlled by the Powersoft ArmoniaPlus software, the amplifiers of the DA range have all the speaker presets or APG systems allowing you to quickly have a powerful and precise sound.

The front panel display and control dial allow easy access and viewing of amplifier parameters.

DA1.4 - 2.8 - 6 professional amplifier feature built-in DSP and secure, remote control over the cloud. Connect the amplifier easily to the WebUI on any HTML5 capable browser (MAC, PC, IOS, Android) with the built-in WiFi hotspot, or to a local area network via cat5 cable.



	Stereo mode			Mono Bridged mode		Size	DSP	Weight
	8 Ohm	4 Ohm	2 Ohm	8 Ohm	4 Ohm			
<b>DA8-AES/DA8-Dante</b>	4x1500W	4x2000W	4x2500W	2x4000W	2x5000W	2U	YES	11,3kg
<b>DA12-AES/DA12-Dante</b>	4x1800W	4x3000W	4x2500W	2x6000W	2x5000W	2U	YES	11,3kg
<b>DA1.4/DA1.4-Dante</b>	4x350W	4x350W	4x350W	2x700W	2x700W	1U	YES	5kg
<b>DA2.8/DA2.8-Dante</b>	4x500W	4x700W	4x700W	2x1400W	2x1400W	1U	YES	6kg
<b>DA6/DA6-Dante</b>	4x1500W	4x1500W	4x1500W	na	na	1U	YES	8kg



# TVV SOUND PROJECT

STEENWEG 148C

9810 NAZARETH - BELGIUM

T +32 (0)9 384 62 31

INFO@TVVSOUND.BE - WWW.TVVSOUND.BE

***APG***

---